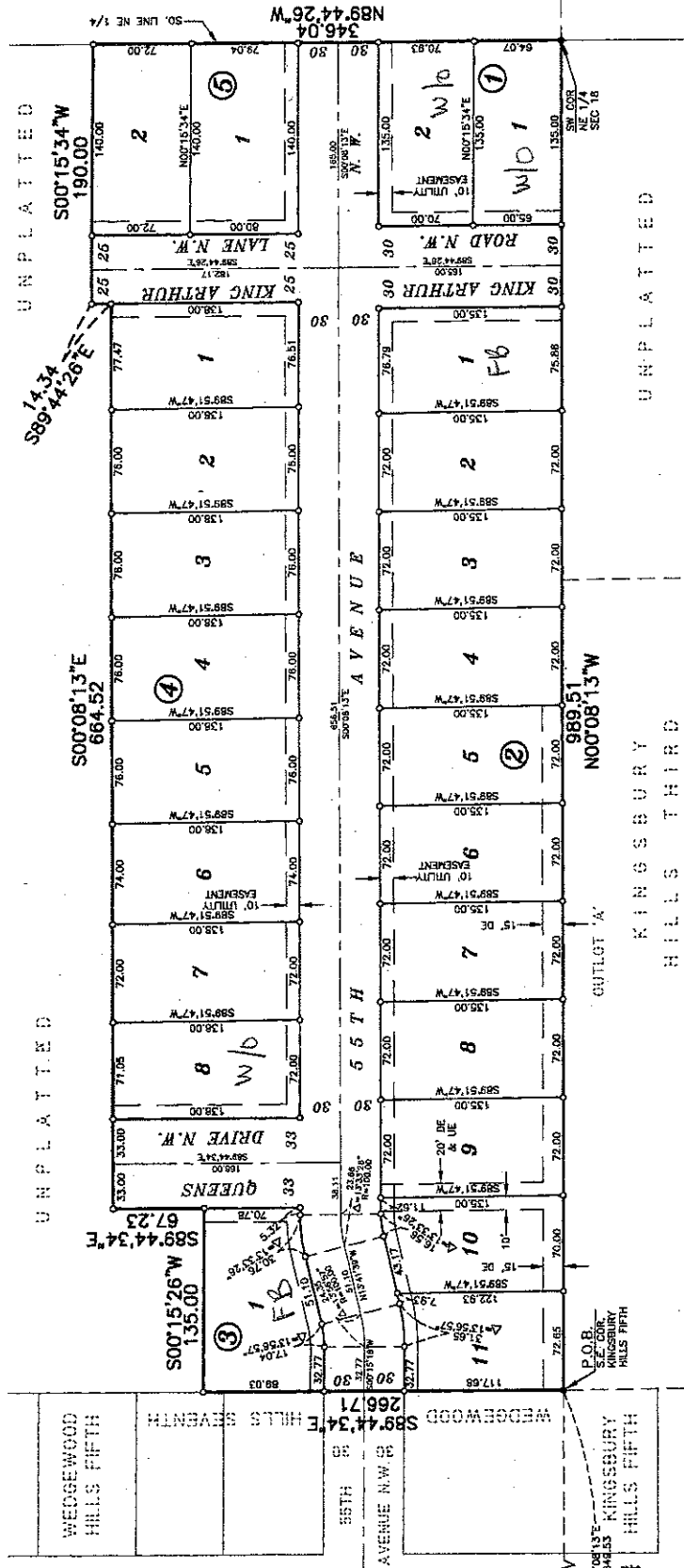
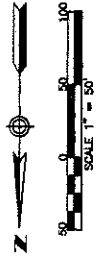


OFFICIAL PLAT

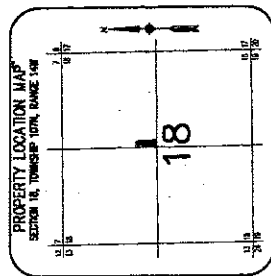
CASCADE PASS



UTILITY EASEMENT (U.E.) defined:
 An easement for the construction and maintenance of all necessary underground or surface public utilities including rights to conduct drainage and framing on and easement.

DRAINAGE EASEMENT (D.E.) defined:
 An unobstructed easement for the operation and maintenance of waterways, both surface and underground, running over, across, and under said easement.

NOTE:
 ALL DIMENSIONS SHOWN HEREON ARE BASED UPON THE SURVEY OF THE PROPERTY AND THE RECORDS OF THE PUBLIC RECORDS OF THE COUNTY OF ROCKFORD, ILLINOIS. ALL DIMENSIONS SHOWN HEREON ARE BASED UPON THE SURVEY OF THE PROPERTY AND THE RECORDS OF THE PUBLIC RECORDS OF THE COUNTY OF ROCKFORD, ILLINOIS. OTHERWISE NOTED.



PREPARED BY:
 CAROL A. BERT, INC.
 PLANNERS AND SURVEYORS
 ROCKFORD, ILLINOIS

1052B

CASCADE PASS SHEET 2 OF 2 SHEETS